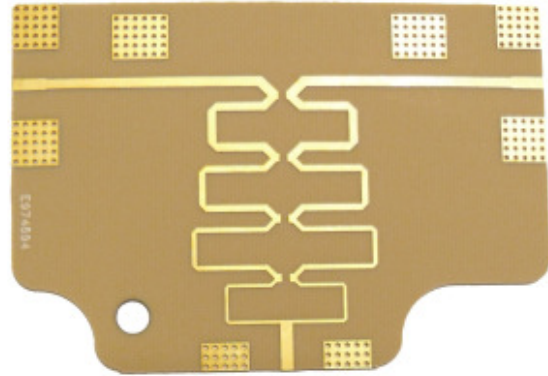


700 – 4000 MHz Low-Loss Wilkinson Type Power Splitter PCBA

Features

- 0.7 GHz to 4 GHz Frequency Range
- 20 Watt Power handling
- 2-way divider

Picture



Applications

- Communications Systems
- CDMA, GSM, LTE
- 4G, PCS, PMR, UMTS
- TETRA, WiFi, WiMAX
- Distributed Antenna Systems (DAS)
- Wireless Infrastructure
- Amplifier Power Dividing
- Defense Applications
- Test and Measurement

Description

PCBA-WL0727-LL is a two-way multistage Wilkinson-type power divider. It is the PCBA version of WL0727-LL and comes without connectors and enclosure.

Power dividers have many applications and so perform many valuable functions. Examples are antenna beam forming, taps for cable distributed systems, combining feeds to and from antenna.

700 – 4000 MHz Low-Loss Wilkinson Type Power Splitter PCBA

Electrical Specifications

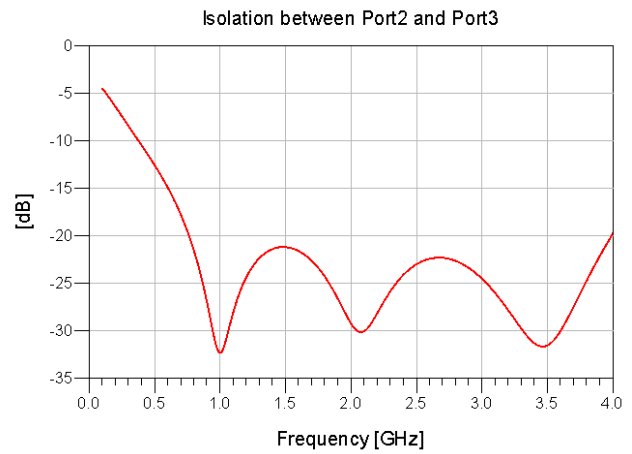
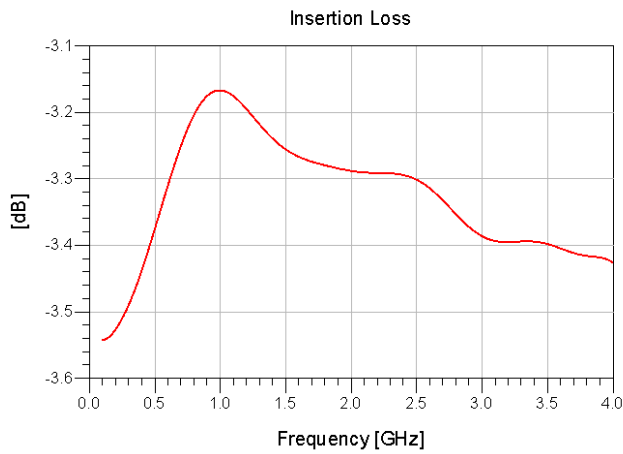
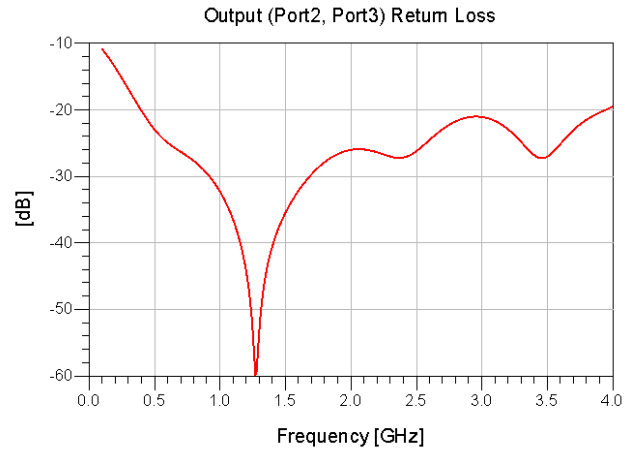
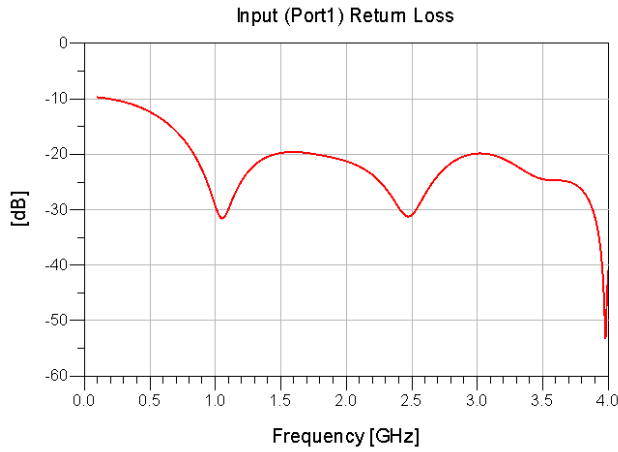
Parameter	Sym.	Units	Condition	Min.	Typ.	Max.
Frequency Range	f	MHz		700		4000
Impedance	Z	Ohm			50	
Return Loss	RL	dB				-20
Insertion Loss	IL	dB	700 MHz – 2500 MHz	0.17		0.3
			700 MHz – 4000 MHz			0.4
Isolation		dB		20	27	
Amplitude Balance		dB				0.1
Phase Balance		°				0.5
Input Power	P_{IN}	dBm	CW		43	
Reverse Power		dBm	CW		30	

Absolute maximum ratings

Operating Temperature	T	°C		-40		70
Input Power	P_{IN}	dBm	CW		46	
Reverse Power		dBm	CW		30	

700 – 4000 MHz Low-Loss Wilkinson Type Power Splitter PCBA

S-parameters



700 – 4000 MHz Low-Loss Wilkinson Type Power Splitter PCBA

Outline Drawing

