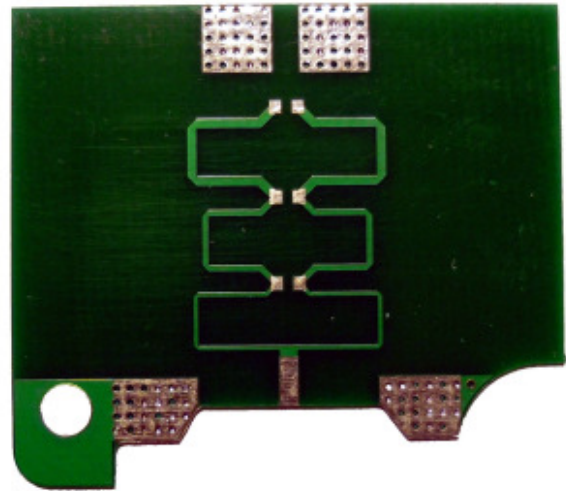

Wilkinson-Type Wideband Power Splitter PCBA

Features

- 700 MHz to 2700 MHz Frequency Range
- 1 Watt Power handling
- 0.6 dB loss at 2.4 GHz

Picture



Description

PCBA-WL0727 is a two-way, multistage Wilkinson-type power divider. Connections to Port 2 and Port 3 are intended to use RG-174 or similar coaxial cable.



PCBA-WL0727

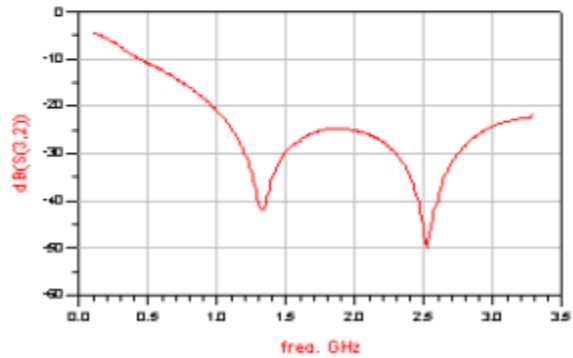
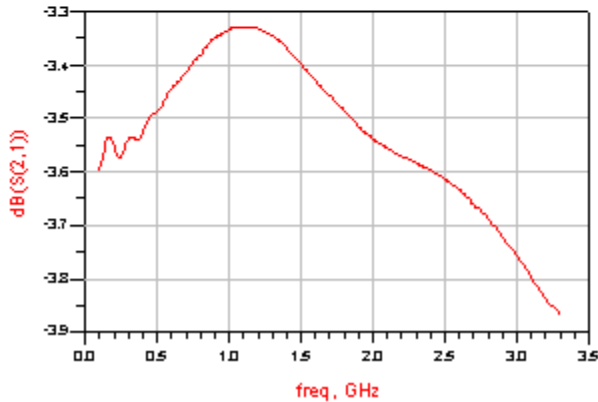
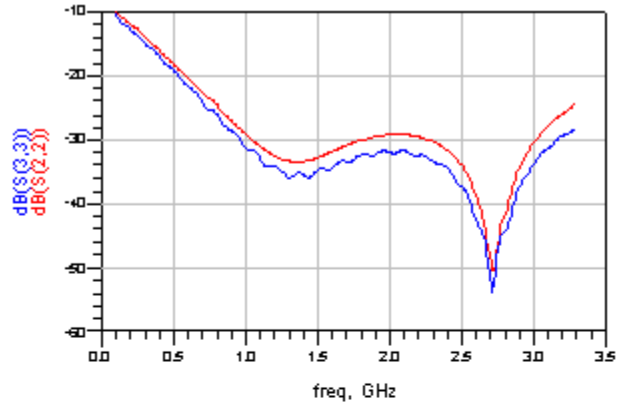
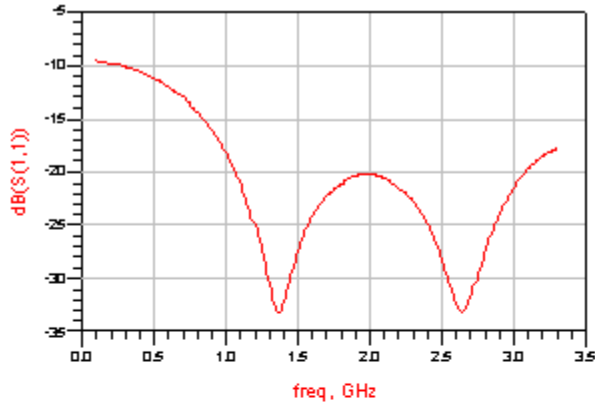
www.GemMicrowave.com

Wilkinson-Type Wideband Power Splitter PCBA

Parameter	Sym.	Units	Condition	Min.	Typ.	Max.
Absolute maximum ratings						
Operating Temperature	T	°C		-40		70
RF Input Power	P_{IN}	dBm	"Input" port		30	
Electrical Specifications						
Frequency Range	f	MHz		700		2700
Return Loss	RL	dB				-20
Insertion Loss	IL	dB	@ 2700 MHz		0.66	
Isolation		dB	@ 2700 MHz		-25	

Wilkinson-Type Wideband Power Splitter PCBA

S-parameters



Wilkinson-Type Wideband Power Splitter PCBA

Drawing

